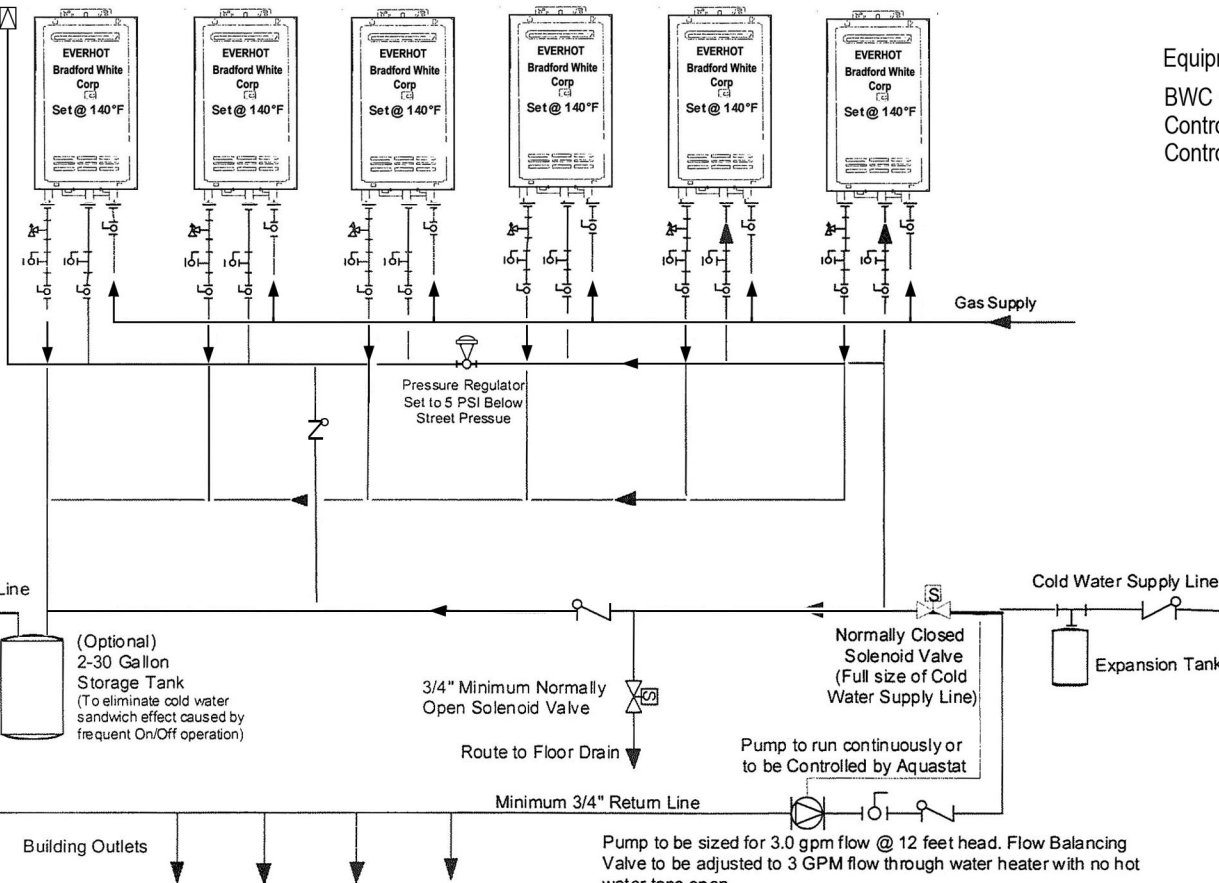


3/4" Vacuum Breaker



Equipment List	Quantity
BWC Commercial EVERHOT	6
Controls Pack A, (p/n 239-44511)	2
Controls Pack B, (p/n 239-44512)	3

NOTES:

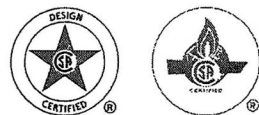
ALL pipe and fittings shown below dashed line must be located inside heated space.

It is recommended that the vacuum breaker lines also to be located inside heated space. If they must be located outside, they must be heat traced and insulated.

Heat trace and insulate ALL water pipe and fittings located outside building or in unheated space.

Water heater outlet temperature cannot be adjusted when circ. pump is running.

Pump to be sized for 3.0 gpm flow @ 12 feet head. Flow Balancing Valve to be adjusted to 3 GPM flow through water heater with no hot water taps open.



ANSI Z21.10.3
CSA 4.3

EVERHOT SERIES WATER HEATERS

**Domestic Hot Water - Freeze Protection/Circulation
6 EVERHOT Water Heaters
Preferred Piping Installation**

Drawing Number:

Drawing Date:

This drawing is intended only as a guide and not as a replacement for professionally engineered project drawings. It does not imply compliance with local building codes. Installation may vary, depending on installation location, and must be done in accordance with all local building codes. Confer with local building officials before installation.

Key

	3/4" Ball Valve		Pressure Regulator
	3/4" Union		Circulating Pump
	Check Valve		Boiler Drain Valve
	Pressure Relief Valve		Solenoid Valve