

## Commercial Gas Power Vent Kit Energy Saver Models



**Recommended for: New Construction, Electric to Gas Conversions, Renovations, Deteriorated Chimneys, Distance Installations and Negative Draft Situations. Side Wall Connections ONLY.**

### Features:

- For models with inputs ranging from 125,000 BTU's to 505,000 BTU's (36.6 kW to 148 kW).
- Allows for sidewall venting with an atmospheric water heater.
- Temperature sensitive safety spill switches.
- Air proving switch to ensure proper draft.
- For venting up to 100 feet (30 meters).
- 3 different kits available – for 24 volt systems.
- Mounting hardware included.
- 30 foot (9 meters) length wire harness provided to ease installation.
- 1 year warranty.
- AGA and CGA certified for use with either Natural or Propane Gas Models.



### 1-Year Limited Warranty on Component Parts.

For more information on warranty, please visit [www.bradfordwhite.com](http://www.bradfordwhite.com)

For products installed in USA, Canada and Puerto Rico. Some states do not allow limitations on warranties. See complete copy of the warranty included with the water heater.

# Commercial Gas Power Vent Kits

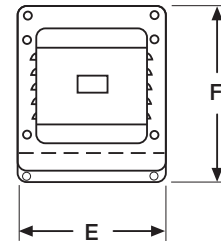
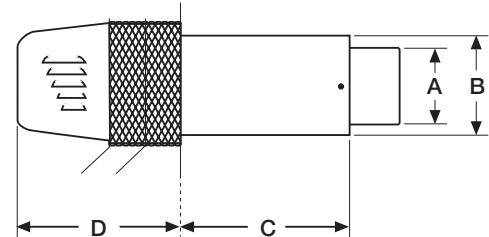
## Gas Power Vent Models

Meets California Energy Commission Requirements.

Kit Number	Part Number	A Flue Size		B Clearance Diameter	C Max Wall Thickness		D Distance Extending from Wall	E Vent Outside Width		F Vent Outside Height		Amp Draw		
		in.	mm.		in.	mm.		in.	mm.	in.	mm.			
1	239-81764-00 (24 Volts)	5	127	7	178	9 $\frac{1}{4}$	235	10 $\frac{3}{4}$	273	12	305	12 $\frac{1}{2}$	311	1.3
2	239-81766-00 (24 Volts)	6	152	8	203	9 $\frac{1}{4}$	235	10 $\frac{3}{4}$	273	12	305	12 $\frac{1}{2}$	311	2.1
3	239-82148-00 (24 Volts)	8	203	10	254	9 $\frac{1}{4}$	235	11 $\frac{1}{2}$	302	13	330	14 $\frac{1}{2}$	362	4.4

## Unit Sizing Chart

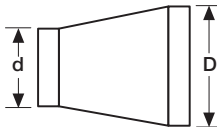
Maximum BTU/Hr. Input	Maximum Equivalent of Vent Pipe		Venting with Vent Pipe Size		Part Number
	ft.	m.	in.	mm.	
290,000	16	4.8	4	102	239-81764-00 (24 Volts)
	51	15.5	5	127	
	95	28.9	6	152	
399,999	28	8.5	5	127	239-81766-00 (24 Volts)
	68	20.7	6	152	
	100	30	7	178	
505,000	65	19.8	10	254	239-82148-00 (24 Volts)



## Equivalents

Vent Pipe Fittings†	3" (76mm.)		4" (102mm.)		5" (127mm.)		6" (152mm.)		7" (178mm.)		8" (203mm.)		9" (229mm.)		10" (254mm.)		
	ft.	m.	ft.	m.	ft.	m.	ft.	m.	ft.	m.	ft.	m.	ft.	m.	ft.	m.	
Tee	19	5.8	25	7.6	31	9.5	38	11.6	44	13	50	15	56	17	63	25	
90° Elbow	5	1.5	7	2	9	2.7	11	3.4	12	3.7	14	4.3	15	4.6	18	5	
45° Elbow	3	.9	4	1.2	4	1.2	5	1.5	8	2.4	7	2	8	2.4	9	3	
Sudden Reducer or Increaser for Three Ratios (d/D)	d/D																
	1/4	8	2.4	11	3.4	14	4	17	7	19	5.8	22	6.7	25	7.6	28	9
	1/2	5	1.5	7	2	8	2.4	10	3	12	3.7	13	4	15	4.6	17	5
	3/4	2	.6	3	.9	3	.9	4	1.2	4	1.2	5	1.5	6	1.8	6	1.8

†Not included with kit.

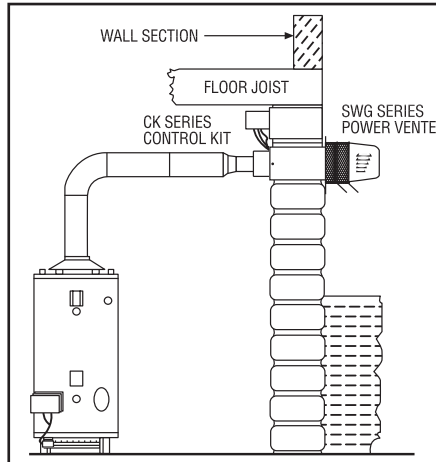


\*Reducer or increaser ratio 4 ft. (d/D) small diameter divided by the larger diameter. Example 4 ft. to 8 ft. reducer; the reducer ratio is  $d/D = 4/8 = 1/2$ . To estimate the equivalent length figure. Example 4" (102mm) to 8" (203mm) reducer; the reducer ratio is 1/2 and the smaller pipe diameter is 4" (102mm). So, from the chart, the equivalent feet would be 7 ft. (2 meters).

Example: System Pipe Size – 4" (102mm)

- Step 1 Two 4 ft. (102mm) 90° Elbows @ 7 ft. (2 meters) each = 14 ft. (4.3 meters)
- Step 2 Ten 2 ft. Lengths of 4" (102mm) Pipe = 20 ft. (6 meters)
- Step 3 Total Equivalent Feet = 14 ft. (4.3 meters) + 20 ft. (6 meters) = 34 ft. (10.4 meters)

**CAUTION:** Failure to install, maintain and/or operate the power venting system in accordance with manufacturer's instructions will result in conditions which may produce bodily injury and/or property damage.



### Venting Requirements

1. The exit termination shall not be less than 7 ft. (2m) above grade when located adjacent to public walkways.
2. The vent shall terminate at least 3 ft. (.9m) above any forced air inlet located within 10 ft. (3m).
3. The vent shall terminate at least 4 ft. (1m) below, 4 ft. (1m) horizontally from, or 1 ft. (.3m) above any door, window or gravity air inlet into the building.
4. The vent termination point shall not be installed closer than 3 ft. (.9m) from an inside corner of an L-shaped structure.
5. The vent termination should not be mounted directly above, or within 3 ft. (.9m) horizontally from an oil tank vent or gas meter.
6. The bottom of the vent terminal shall be located at least 1 ft. (.3m) above finished grade or above maximum expected snow level.

### General

Dimensions and specifications subject to change without notice in accordance with our policy of continuous product improvement.



Ambler, PA

For U.S. and Canada field service, contact your professional installer or local Bradford White sales representative.

Sales 800-523-2931 • Fax 215-641-1670 / Technical Support 800-334-3393 • Fax 269-795-1089 • Warranty 800-531-2111 • Fax 269-795-1089  
International: Telephone 215-641-9400 • Telefax 215-641-9750 / Fax on Demand 888-538-7833 / www.bradfordwhite.com

**BRADFORD WHITE - CANADA** INC. Sales / Technical Support 866-690-0961 / 905-238-0100 • Fax 905-238-0105 / www.bradfordwhitecanada.com

Count On Bradford White  
For Everything Hot Water™

©2006, Bradford White Corporation. All rights reserved.