

## Commercial PowerStor Series<sup>®</sup> Single-Wall Indirect Water Heater



Photo is of  
SW-80C-5

**The PowerStor Series<sup>®</sup> Single-Wall Models feature:**

- **Heat Exchanger**—Single-Wall 1½" O.D. glass coated (Vitrage<sup>®</sup>) carbon steel coil. The coil has a heat transfer area of 27.2 sq. ft. and a stored water volume of 5.0 Gal. Maximum supply temperature from the boiler must not exceed 240° F.
- **Factory Installed Hydrojet<sup>®</sup> Total Performance System**—Cold water inlet sediment reducing device helps prevent sediment build up in tank. Increases first hour delivery of hot water while minimizing temperature build up in tank.
- **Vitrage<sup>®</sup> Lining**—Bradford White water heater tanks are protected from the corrosive effects of hot water by an exclusive ceramic porcelain-like coating that provides a tough interior surface for our hot water tanks.
- **Immersed Adjustable Honeywell Aquastat**—Fast acting immersion aquastat for automatic temperature control.
- **Supply and Return Connections**—1" NPT female connections are located on the front for both the boiler collector supply and return.
- **2" Non-CFC Foam Insulation**—Covers the side and top of tank, reducing the amount of heat loss. This results in less energy consumption, improved operation efficiencies and jacket rigidity.
- **Potable Water Connections**—1" NPT factory installed true dielectric fittings extend water heater life and eases installation.
- **Three Protective Aluminum Anode Rods**—Provide added protection against corrosion for long trouble-free service.
- **T&P Relief Valve**—Installed.
- **Low Restriction Brass Drain Valve**—Tamper proof design.
- **I=B=R Certified**—These water heaters are rated by the Institute of Boiler and Radiation Manufacturers (I=B=R) to provide accurate performance data within the standards of the certification. The I=B=R rating is issued by the Hydronics Institute Division of GAMA and provide a recognized standard for proper comparison of hydronic appliances.



**5-Year Limited Tank Warranties / 1-Year Limited Warranty on Component Parts.**

For more information on warranty, please visit [www.bradfordwhite.com](http://www.bradfordwhite.com)

For products installed in USA, Canada and Puerto Rico. Some states do not allow limitations on warranties. See complete copy of the warranty included with the heater.

# Commercial PowerStor Indirect Water Heater

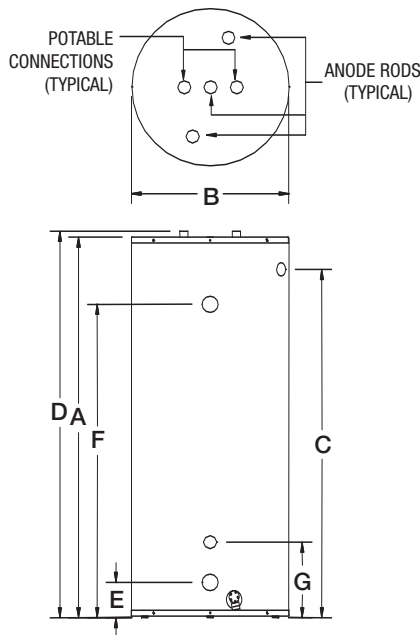
## Single Wall Models

Meet or exceed ASHRAE 90.1b (current standard)

Model Number	Capacity		A Floor to Heater Top in.	B Jacket Dia. in.	C Floor to T&P Conn. in.	D Floor to Water Conn. in.	E Floor to Exchanger Outlet in.	F Floor to Exchanger Inlet in.	G Floor to Aquastat in.	Approx. Shipping Weight lbs.
	U.S. Gal.	Imp. Gal.								
SW-65C-5	58	48	59 <sup>1</sup> / <sub>4</sub>	22	53 <sup>1</sup> / <sub>8</sub>	60	5 <sup>3</sup> / <sub>8</sub>	47 <sup>3</sup> / <sub>4</sub>	11 <sup>1</sup> / <sub>2</sub>	273
SW-80C-5	73	61	59	24	52 <sup>7</sup> / <sub>8</sub>	59 <sup>3</sup> / <sub>4</sub>	5 <sup>3</sup> / <sub>8</sub>	47 <sup>3</sup> / <sub>4</sub>	11 <sup>1</sup> / <sub>2</sub>	300
SW-120C-5	114	95	62 <sup>1</sup> / <sub>2</sub>	28 <sup>1</sup> / <sub>4</sub>	55 <sup>3</sup> / <sub>4</sub>	63 <sup>1</sup> / <sub>4</sub>	6 <sup>3</sup> / <sub>8</sub>	48 <sup>3</sup> / <sub>4</sub>	11 <sup>1</sup> / <sub>2</sub>	422

Model Number	Capacity		A Floor to Heater Top mm.	B Jacket Dia. mm.	C Floor to T&P Conn. mm.	D Floor to Water Conn. mm.	E Floor to Exchanger Outlet mm.	F Floor to Exchanger Inlet mm.	G Floor to Aquastat mm.	Approx. Shipping Weight kg.
	Liters									
SW-65C-5	220		1505	559	1349	1524	137	1213	292	124
SW-80C-5	276		1499	610	1343	1518	137	1213	292	136
SW-120C-5	431		1588	718	1416	1607	162	1238	292	191



### DOE Water Heater Performance

Model Number	Maximum First Hour Rating (Gal.) @		Continuous Draw Rating (Gal./Min.) @		Approximate Boiler Output Needed for Rating (BTU/Hr.)
	140°F	115°F	140°F	115°F	
SW-65C-5	534	820	8.0	12.8	420,000
SW-80C-5	546	834	8.0	12.8	420,000
SW-120C-5	583	871	8.0	12.8	420,000

Based on 200°F boiler water temperature and 50°F potable water inlet.

### I=B=R Water Heater Ratings

Model Number	First Hour Delivery @ 135°F (Gal.)	Continuous Draw Rating @ 135°F (Gal./Hr.)	Standby Heat Loss Rating (°F/Hr.)	Minimum Output Rate of Heat Source (BTU/Hr.)	Minimum Heat Source Flow Rate (Gal./Min.)
SW-65C-5	405	370	0.7	245,000	14.0
SW-80C-5	415	370	0.6	245,000	14.0
SW-120C-5	445	370	0.4	245,000	14.0

These certified ratings were obtained with a heat source output rate and flow rate as specified and a 180°F boiler water supply temperature. Other results will be obtained under different conditions.

### Heat Exchanger Head Loss

GPM	5	8	10	12	14
Ft. of Hd. Loss	0.64	1.63	2.55	3.67	5.00

### General

All units are certified at 300 PSI (2068 kPa) test pressure and 150 PSI (1034 kPa) working pressure. All potable water connections are 1" (25.4mm) NPT on 8" (203mm) centers.

**Dimensions and specifications subject to change without notice in accordance with our policy of continuous product improvement.**

**Suitable for Water (Potable) Heating and Space Heating.**

Toxic chemicals, such as those used for boiler treatment, shall NEVER be introduced into the potable side of this system. The potable side may NEVER be connected to any existing heating system or component(s) previously used with a non-potable water heating appliance.



Ambler, PA

For U.S. and Canada field service, contact your professional installer or local Bradford White sales representative.

Sales 800-523-2931 • Fax 215-641-1670 / Technical Support 800-334-3393 • Fax 269-795-1089 • Warranty 800-531-2111 • Fax 269-795-1089

International: Telephone 215-641-9400 • Telefax 215-641-9750 / [www.bradfordwhite.com](http://www.bradfordwhite.com)



BRADFORD WHITE-CANADA INC. Sales / Technical Support 866-690-0961 / 905-238-0100 • Fax 905-238-0105 / [www.bradfordwhite.com](http://www.bradfordwhite.com)

**Built to be the Best™**

©2010, Bradford White Corporation. All rights reserved.